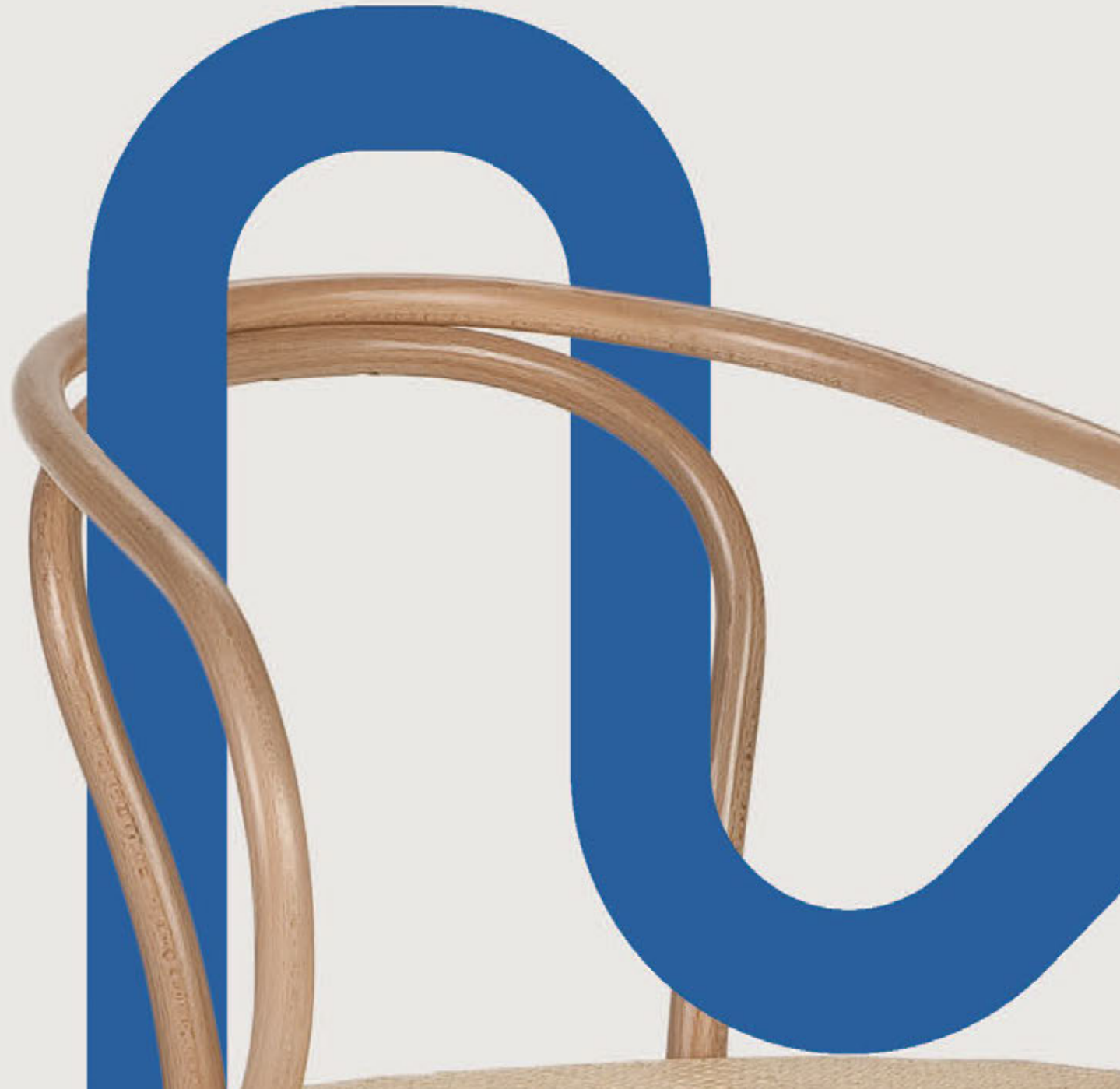


Paged

Paged Meble
2024



Paged Wood is part of THUMOS, an international investment – industrial holding group.

Founded over **140 years** ago, Paged is now **one of the five largest plywood manufacturers** and **significant producer of wooden chairs** in the European Union. It offers innovative solutions and products that are used in a wide range of industries such as interior design and furnishings and construction in nearly eighty markets worldwide.



PLYWOOD



FURNITURE



TRADE



PAGED is a group of companies operating in the wood processing industry. Our main business activities include:

- the **manufacture of plywood**
- the **manufacture of furniture**
- the **trade of wood-based panels**

480,000 chairs
(1,300 per day)

We have a powerful production capacity.
We can produce nearly **half a million chairs per year**.



7 factories

Our manufacturing plants are located in Jasienica, Morąg, Pisz, Bartoszyce and Pärnu (Estonia).

>2,000 employees

We employ people with unique skills and experience.

6,000m³

Production capacity reaches **6,000m³ of veneer per month**.

>200,000 m³

We produce over **200,000 m³ of plywood per year**.





1907

The Leopold Pilzer establishes **Mundus AG**



1931

Adam Loret founds the progenitor of our brand **Polska Agencja Drzewna (Polish Wood Agency or PAGED)**.

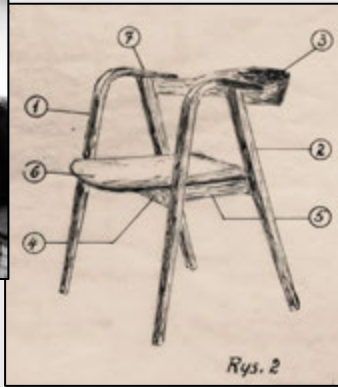


1951

Foreign Trade Agency PAGED whose task was to sell products of Polish producers' furniture, sawmill, plywood and paper, to export markets.

1956

PAGED collaborates with **Marian Sigmund**, a legendary designer. They release about 40 different furniture models, including the iconic A-587 "Sig-1" chair.



1881

The Jasienica bentwood furniture factory is founded by Josef Hofmann

1923

Another acquisition "**Thonet-Mundus**" AG is established



1947

Most of Thonet-Mundus resources become nationalised: Fameg (Poland), Gebrüder Thonet (Germany), PAGED (Poland), TON (Czechoslovakia).

"THONET-MUNDUS"
POLSKIE FABRYKI GIĘTYCH MEBLI, SPÓŁKA AKCYJNA.

1954

The first appearance of the Paged brand at **Fiera di Milano**.



1997

Privatisation of the company, establishment of the PAGED S.A. Group of Companies.

2019

Foundation of Paged LabTech





The furniture designed and produced by Paged is the result of knowledge of **traditional craftsmanship**, which, in addition to solid workmanship, consists of thinking about ergonomics, durability and design.

Each product is the work of at least **20 pairs of hands**.

They are the hands of a team of craftsmen, carpenters, finishers who for **six generations** have been endowing steamed wood with new shapes and forms.

Since 1881, when the Jasienica factory was founded, our brand has sought to enrich furniture with new **quality** attributes and further areas of application. Work has been carried out on, among other things, increasing **durability**, making transport easier, preparing for self-assembly, customisation and many other aspects.

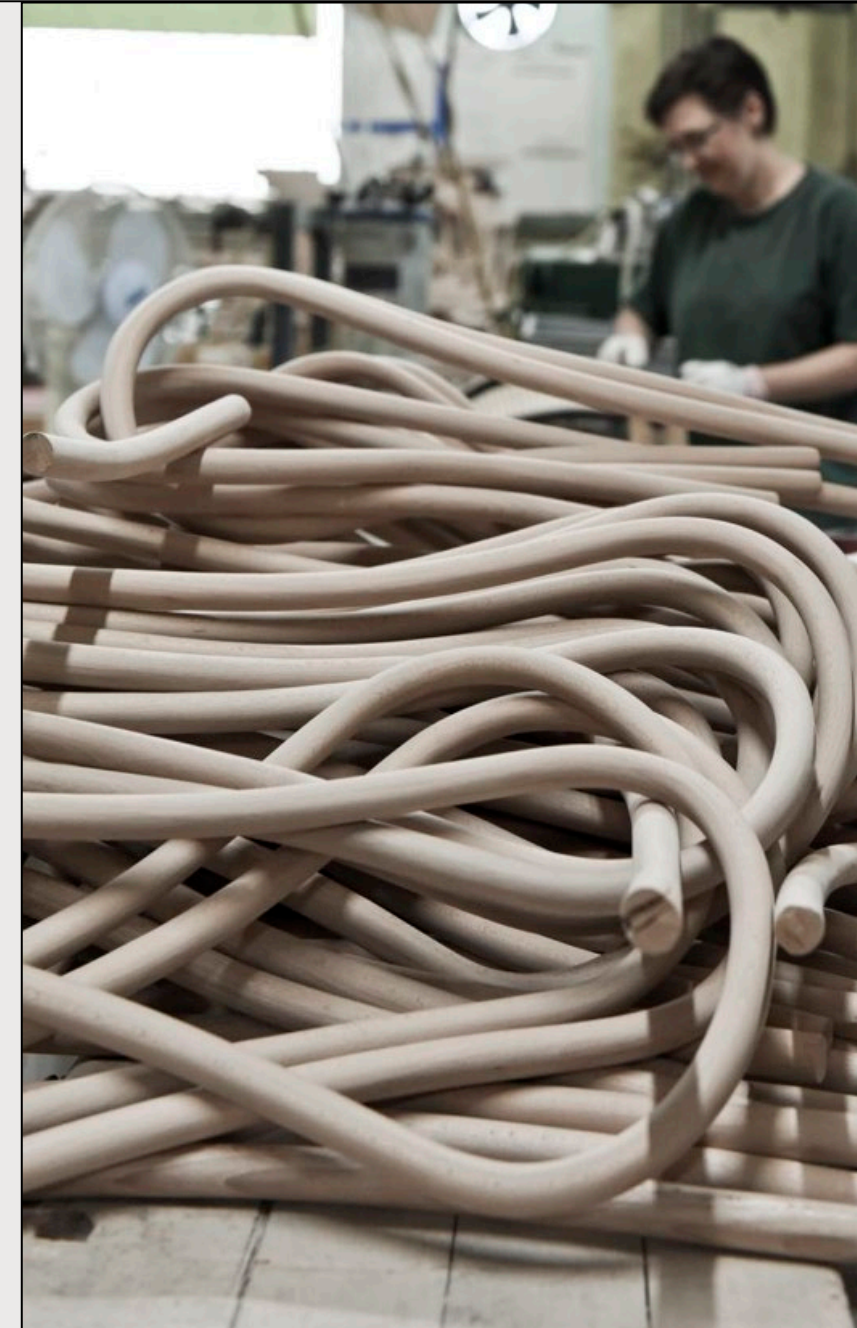




Paged
CIRCULAR
ECONOMY
READY



- We are guided by the principles of environmental, social and **corporate sustainability**, also known as ESG (environmental, social and corporate governance).
- Our furniture is made from wood sourced from responsibly managed forest resources as **certified by the FSC®** (Forest Stewardship Council).
- We offer **GreenPly** - hardwood, interior grade plywood made of sustainably sourced Baltic birch and natural, **formaldehyde-free adhesive**



- All our furniture undergoes rigorous **endurance tests**, thus ensuring that its high quality is maintained over the long term.
- We use **water-based varnishes and environmentally-friendly adhesives**. This sustainable practice is central to both the production and purpose of our furniture, which generates no negative environmental impact once it leaves the factory and during its use.
- Production is an energy-efficient process – our **wood waste** is used as a fuel to heat the water and treat the wood with steam.
- Since January 2024, the Jasienica factory exclusively operates on electricity harnessed from **photovoltaic farms**.

**Powered by Nature: 100% Production
Fueled by 100% Renewable Energy**





New product development remains our top priority at Paged

Paged LabTech is a multi-million unique global investment aimed at technological innovation in the industry which is using wood as a natural raw material.

The laboratory is equipped with state-of-the-art equipment, which enables the company to carry out tests on wood, composites and wood-based panels and to carry out complete product certification.



The patented WRB (Weather-Resistant Beech) removes the distinction between "outdoor" and "indoor" furniture. **The very same chair can be used in a conference room, beer garden or on the beach.**



**Resistance to high
temperatures
and UV radiation**



**Wind, changing
weather**



**Humidity,
precipitation**



**Coastal climate,
saltwater**



Working with renowned designers allows us to offer unique designs that stand out in the market. Our products combine craftsmanship, modern design and functionality to meet the expectations of even the most demanding customers.

Our furniture is designed by Pedro Salgado, Agnieszka Pikus, Tomek Rygalik, Grzegorz Gancarczyk, Jakub Szczęsny, Dario Polaco, Nikodem Szpunar, Bartłomiej Lewandowski, Studio Iskry, Ola Mirecka, Grzegorz Wit, Jadwiga Husarska-Sobina...

Product solutions

The Nodo armchair is a lightweight piece of furniture, made from bent beech wood, where a wide and comfortable seat balances the light and minimalist structure, made from just two beech rods. Similar to the chair, this armchair also allows for the seat to be lined with a mat or upholstery fabric.



Oliwa i Ogień – Italian restaurant
Wrocław, Poland



EVO re-interprets the classic four leg chair with an unconventional arrangement of the legs. in the contemporary version of the furniture the number of the legs has been reduced, which resulted in a refreshed form. Unusual construction ensures an astonishing stability and durability of the furniture.



Ework,
Warsaw, Poland



Zayed University,
Dubai, United Arab Emirates



Lipton Office,
Warsaw, Poland





Coco Chang Restaurant,
Wrocław, Poland



A family of chairs distinguished by their structure combining both bent and turned parts with a seat made of profiled plywood. Although built of a small number of elements, they provide solid and comfortable support.





Fortum Office,
Wroclaw, Poland



Jaworscy Confectionery,
Wroclaw, Poland

*Why bake,
Just order and*



It is a modern armchair created with a unique XIX century technology of bending beech wood under the pressure and steam. **LA BENDA** fascinates with the subtleness of construction and feasts your eyes with harmony and incredibly gentle form. It seems light as if it was floating in the air.





GERMAN
DESIGN
AWARD
NOMINEE
2022



Nazwa,
Miejsce

Tarasowa Restaurant,
Wroclaw, Poland



A slender, unpretentious and universal chair. The lightness of its structure corresponds to visual lightness even though the chair is characterized by a robust backrest and a stable seat. The chair may be stacked (up to 6 units).



Przy Nyskiej Cafe,
Wrocław, Poland



Appartments,
Gdańsk, Poland



Sister of Soul,
Richmond, Australia



Oficyna Cafe,
Gdańsk, Poland



Elegant, minimalist, and versatile, this chair features a sleek design that is light both structurally and visually. Its backrest is carefully woven, while the seat is crafted from Danish cord, adding a unique appearance. The model belongs to the Aller Ego collection, awarded the title "Best Polish Design."



The asymmetrical design, with straight and lower legs at the front and curved legs at the back, gives it a unique, dynamic character. Perfect for design enthusiasts looking for furniture with a distinctive shape. The chair is available with upholstered seat and back.





Fujifilm,
Warsaw, Poland



Private Apartment,
Gdynia, Poland



The LOREM collection enables your plans to take shape. The shape of a rounded rectangle, which is the LOREM's family leitmotiv. The rounded rectangle form helps to bring fun and leisure into your mind.

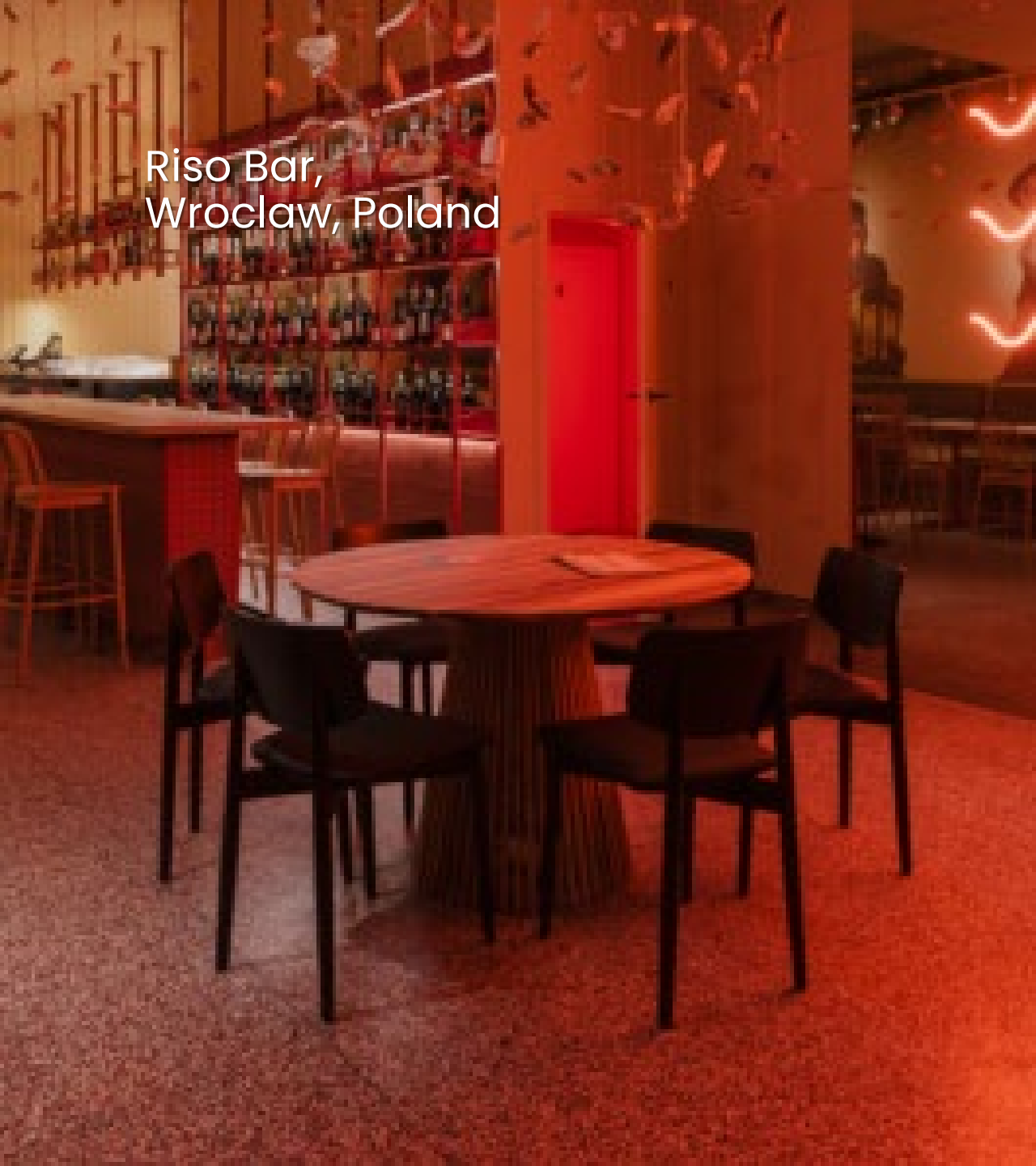


The **PLASA** chair's design draws from classic bent café chairs, evident in the shape of its backrest. This reference is filtered through new wood processing technologies and the goal of maximizing weight reduction without sacrificing the furniture's durability and stability, essential for both commercial markets and home environments.





Riso Bar,
Wroclaw, Poland



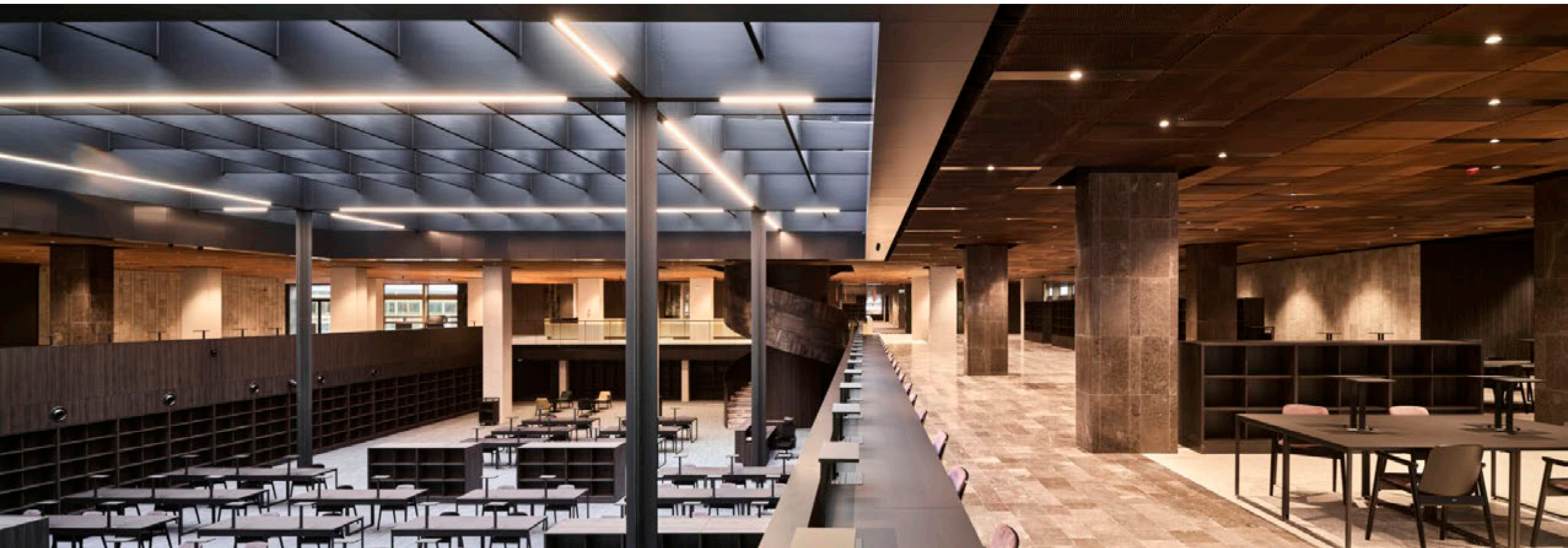
Forbis Group, Warsaw, Poland



The strength of the PROP design is combining classical style with minimalism. The furniture structure is made of turned wooden legs with the seat and backrest made of plywood. Upholstery is an additional element which adds softness to the models and underlines their unique character.



National Library, Warsaw, Poland



Fujifilm,
Warsaw, Poland



Xceedance Office,
Krakow, Poland



Some interior designs require unorthodox solutions. The YESTERDAY collection fully meets this criterion. While the designs included in it hearken back to classic patterns, their minimalistic nature and original details make YESTERDAY an ideal match for modern decor as well.





SMITH+NEPHEW
Wrocław, Poland



Cremino Cafe, Bielsko-Biala, Poland



Uniwersal Bar, Namysłów, Poland

[illegible]

Di Cafe,
Wroclaw, Poland



A reduced design with strong expression and fresh form, provided by a cross structure and backrest in a shape of a horseshoe embracing the user. Its straight forward simplicity is enhanced by the unique detail of the front leg.



Office space,
Poland



Yavir Restaurant,
Ukraine



The LOF chair features a strong, stable construction and an unassuming design. It enjoys popularity due to its neutral character, seamlessly fitting into both traditional and modern spaces, from intimate gatherings to offices or hotel interiors. The model is available in an upholstered version.



Mc Kinsey,
Poland



National Library,
Warsaw, Poland



Concordia Design Restaurant,
Wroclaw Poland





The name NOTE was inspired by the English term "notice" - to observe. It refers to the product as a noticeable new pattern or direction. The backrest, enhancing seating comfort, and a pocket located at the back of the chair were introduced as additional functional features. The product can be used in both office and residential spaces.



ARIA armchair – the “W” variant. The designer knew that there would be a huge veneered outer surface of the backrest at his disposal. This surface clashed into a contrast with the upholstered layer on the inside



Lipton Office, Warsaw,
Poland



Fujifilm,
Warsaw, Poland





Forbis Group, Warsaw,
Poland



Good solutions never age. Evoking associations with the geometric design of the 70s, the TUK collection meets all the demands of contemporary audiences. The distinctive feature of the collection, in the form of hexagonal panels from which the seat, backrest, and armrests are constructed, gives the furniture a modernist flair.



[for more details visit our website](#)

Xceedance Office,
Krakow, Poland



Avis,
Warsaw, Poland



Ovocny Svetozor,
Pruhonice, Czech Republic



Mercure Hotel,
Tokaj, Hungary



K2 is a family of wooden upholstered furniture that was created in response to the increasing demand for contemporary mountain-style furniture that would harmoniously complement advanced architecture emerging in the foothills of the tatra and beskid mountains and the Alps.





JLL Office, Warsaw, Poland



JLL Office, Warsaw, Poland



Fun and optimism are the two values that perfectly reflect this chair's nature. Both the seat and the backrest are rounded, which makes Dot appear happy and somewhat childlike.



[for more details visit our website](#)

The ARGO family is a tribute to the harmony of composition. The strong, straight lines of the chair's lower part serve as an excellent contrast for the bold, dynamic curves of its upper backrest and the seat outlines.



Coca-Cola HBC Office,
Warsaw, Poland



The ALDO chair is a perfect blend of modernity and tradition. Its unique backrest and rear legs, bent from a single piece of wood using a manual bending method, give it an elegant and cohesive look.



Riso Bar,
Wroclaw, Poland



The ANTILLA collection is known worldwide. Its characteristic features include backrests made using long, turned beech rods with a "crest" at the top, as well as vintage-style design. An H-shaped support structure below the seat ensures optimal stability for all chairs and armchairs in this collection.



Meininger Hotel,
Krakow, Poland



Coca-Cola HBC Office,
Warsaw, Poland



Pacyfik Bar,
Warsaw, Poland

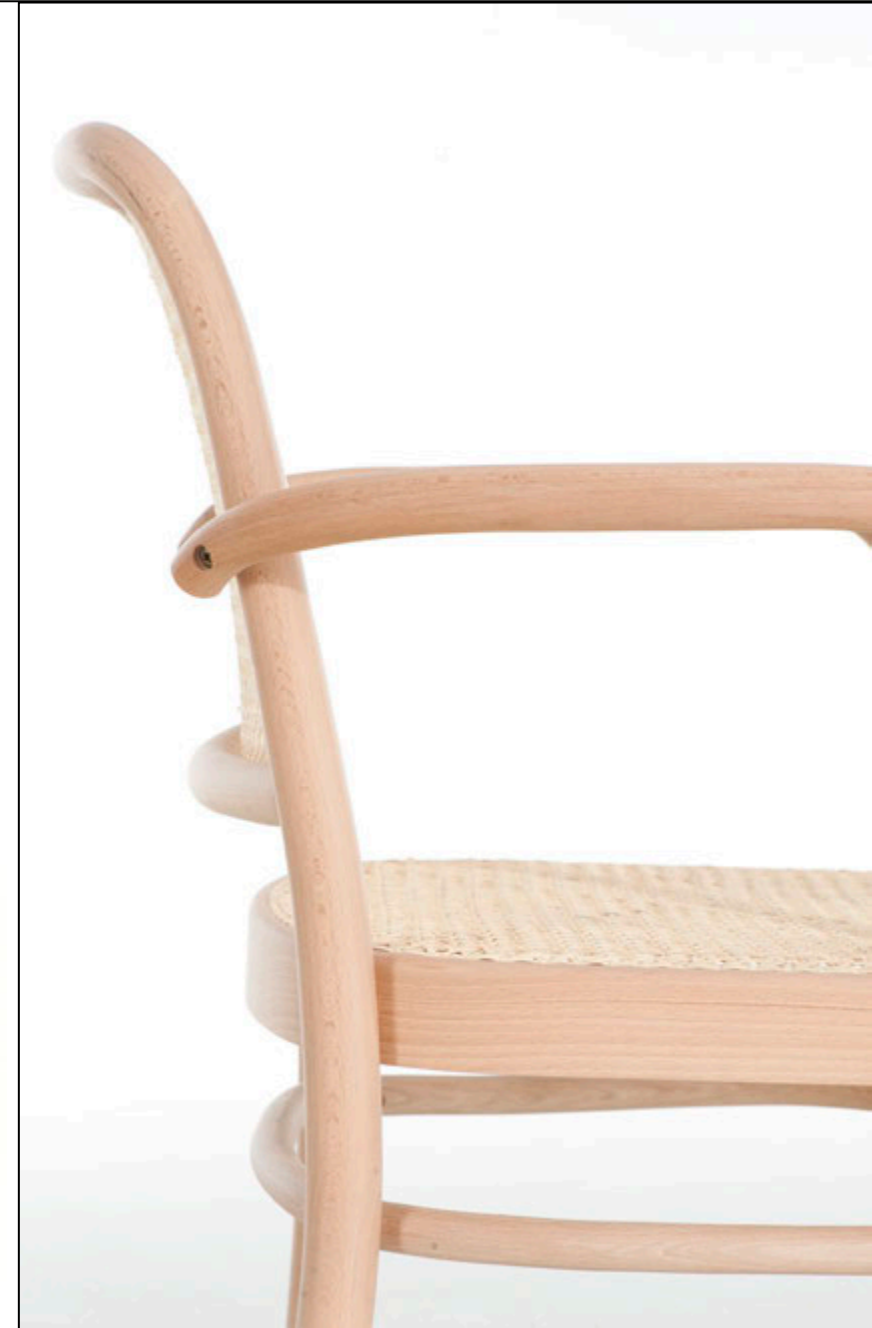




OTSU,
Osaka, Japan



BENKO is an attempt to reinterpret the 19th-century technology of bending beech wood, utilizing it to create a model that meets the demands of contemporary times. Benko is clearly inspired by the archetype of the bent chair, the first iconic models made with this technology, expressed in its purest form.





Hygge Hotel,
Opole, Poland



Fouco Blu is a modern version of the classic Thonet model A-1880. The designers from Studio Iskry have given it a unique character by using ash wood with its distinctive grain for production and introducing an intriguing element - a brass sphere that serves as a purse hanger. The model belongs to the Aller Ego collection, awarded the title "Best Polish Design."



[for more details visit our website](#)

A legendary furniture collection, which strives to continue the beautiful, 140-years-long tradition of the Jasienica plant. In the early 20th century, the Thonet-Mundus brand was an international furniture powerhouse whose designs had become icons of fashion and popular culture.



Bazylic Restaurant,
Bielsko-Biała, Poland

bazylic







Woosabi,
Wrocław, Poland



PERLINE is a true masterpiece of functional art. It's not just a chair but also a toy, a meditation tool, and a sculpture that invites touch. The beads are not merely decorative; they are also an interactive element full of joy. They serve as an excellent play tool for both the youngest and the slightly older, simultaneously supporting concentration development.



The bent furniture collection draws on the beautiful tradition of the Jasienica factory, with a history spanning over 140 years. The collection includes chairs and stools manufactured using the technique of manual bending of beech wood, employing steam and pressure.



The 8110 family allows you to create warm, cosy and beautiful interiors. This is thanks to its neutral, classicist design, which is slightly reminiscent of the colonial style, as well as a blend of two traditional furniture-making techniques that are virtually nonexistent in today's world.





[for more details visit our website](#)

The 51 family includes sophisticated retro style furniture. The production method, which consists in using beech wood steam- and pressure-bending technology originating in the 19th century, also brings the golden age of the Thonet-Mundus brand to mind.



[for more details visit our website](#)

Only the most perfect products may eventually become symbols of a given category. This is also true in the case of the 8250 collection, with its B-8250 rocking chair having already attained iconic status.



The collection features classic upholstered chairs and stools inspired by the design of the 60s. A distinctive element of the model is its wide bucket backrest, which provides high user comfort.





Hanging Gardens Restaurant,
Bucharest, Romania



The chair frame connected with a moulded plywood backrest creates particularly resistant structure that does not require additional joining of the legs. thanks to that the furniture remains visually light.



A new, simple chair with an interesting geometric form. Designed for the needs of the HoReCa market, it surprises with its impressive stacking ability. In a small space you can set up a column of up to 9 chairs of this model.



The family of Corte furniture is composed of three different chairs whose structure is based on one support frame. The name "Corte" (Spanish: "cut") comes from the characteristic cutout of the seat plywood..



The spirit of 1980s design in a new, fresh form. The X-CHAIR family utilises turned, tapered legs with H-shaped supports to increase the chair's stability, which is a solution that used to be quite popular in furniture design.



The LINK family was developed with extraordinary connections in mind. The slender line of its plywood moulding, used for both the seat and the backrest surfaces, creates visual contrast with the strong, solid base that smoothly blends in with the armchair's armrests.





Musee de l'Homme,
Paris





C-4303



C-4375



C-4368



C-4346

[for more details visit our website](#)



C-2082



C-4076



C-4086

We furnish the world of restaurants and cafes, hospitality, residentials and offices, e.g:

- Allegro
- Allen & Overy
- AMWAY
- BNP Paribas
- BP
- British American Tobacco
- CMS Cameron McKenna Nabarro
- Coca-Cola
- COTY
- DGS
- Dior
- DPD
- Galaxy Firmware
- Generali
- Google
- Hebe
- Husqvarna Poland
- Huuuge Games
- KONICA MINOLTA
- McKinsey
- Mercedes-Benz
- Miele
- Mondelez
- Nationale-Nederlanden
- Orange
- Pepsico
- Provident
- PWC
- Siemens
- Sollers Consulting
- Tchibo
- TNT
- Universal Music
- Yves Rocher



Thank you.